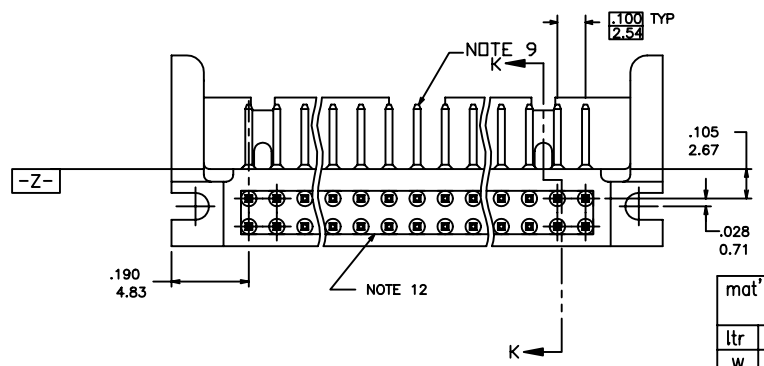
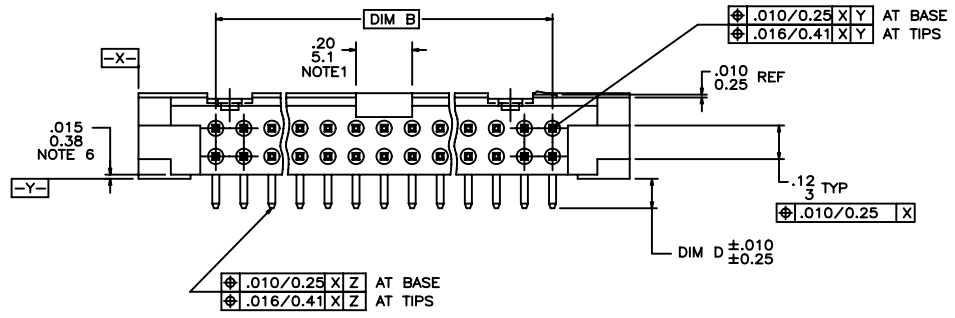
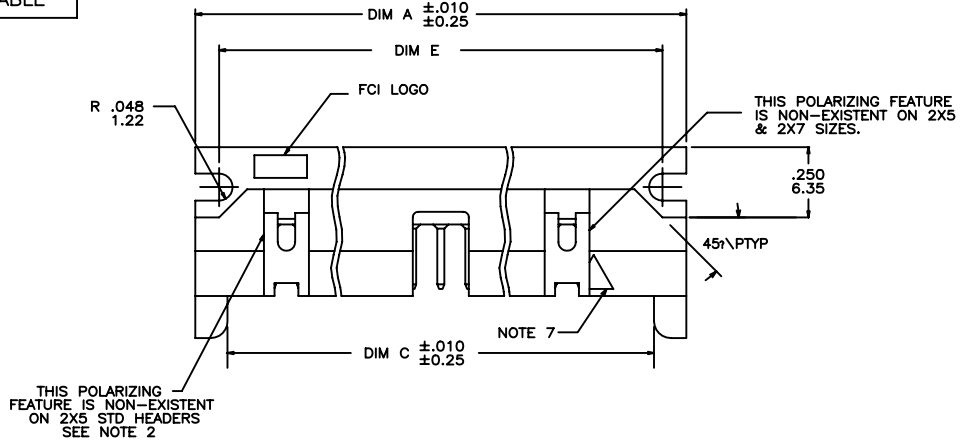


PRODUCT NO.
SEE TABLE



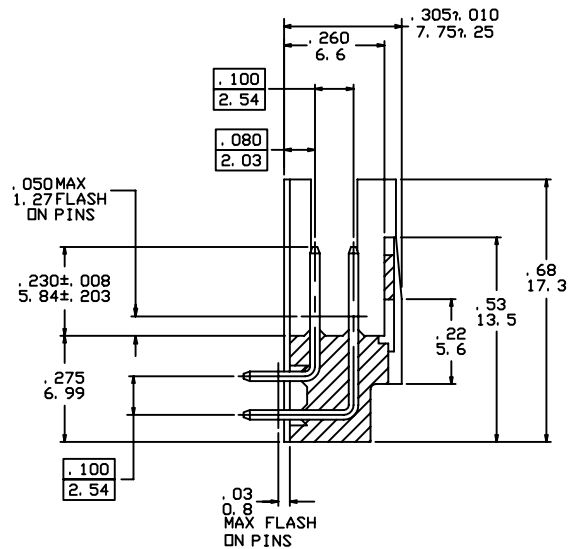
Tous droits strictement reserves. Reproduction ou communication a des tiers interdite sous quelque forme que ce soit sans autorisation ecrite du proprietaire. Propriete de c FCI. Droits de reproduction FCI.



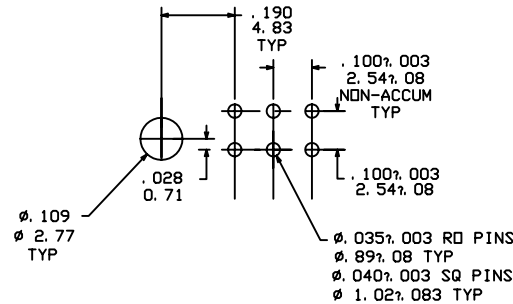
All rights strictly reserved. Reproduction or issue to third parties in any form whatever is not permitted without written authority from the proprietor. Property of FCI. Copyright FCI.

mat'l. code SEE NOTE 3				tolerances unless otherwise specified			CUSTOMER COPY		FCI www.fciconnect.com	
ltr	ecn no	dr	date	linear	.xx ±.01/.x±.3		projection ↗ ↖	title HEADER,QUICKIE SLIM LINE,RIGHT ANGLE		
W	T10173	MRC	09/03/91		.xxx ±.005/.xx±.13			product family QKE.HDR.	code 213	
X	V04-0921	PJ	09/21/04		.xxxx ±.0020/.xxx±.051				size dwg no 65496	sheet 1 of 7
Y	N05-0123	ZC	5/9/05	angles	0° ±2°		scale 5:1	A		
AA	N07-0151	WG	7/26/07	dr	P.JAYADEEP	09/21/04		cage code		
				enr	H.SUNDY	09/21/04		Printed: Feb 19, 2008		
				chr	H.SUNDY	09/21/04				
				appd	H.SUNDY	09/21/04				
sheet index	revision sheet	AA 1	AA 2	AA 3	AA 4	AA 5	AA 6	AA 7		

PRODUCT NO.
SEE TABLE



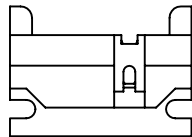
SECTION K-K
SCALE 8/1



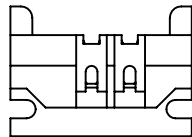
RECOMMENDED HOLE PATTERN
SCALE 10/1

NOTES:

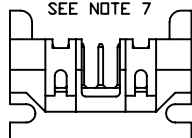
- ① POLARIZING SLOT NON-EXISTENT ON STYLE A 2 X 5 ONLY.
- ② STD. 2 X 5 HEADERS WILL HAVE NO DESIGNATION IN CHART. STYLE A 2 X 5 HEADERS WILL BE DESIGNATED STYLE A IN CHARTS.
- ③ MOLDING MAT'L: GLASS FILLED POLYESTER, FLAME RETARDANT PER UL94, V-0. COLOR - BLUE.
4. 1° MAX DRAFT PERMISSIBLE ON ALL SURFACES UNLESS OTHERWISE INDICATED.
5. .37/9.4 MAX DIM FROM MOUNTING SLOT TO EDGE OF BOARD FOR DIASY CHAIN.
- ⑥ .015/ .38 STANDOFF LOCATED APPROX AS SHOWN.
- ⑦ ARROW IDENTIFICATION DENOTING PIN#1 POSITION.
8. PIN MAT'L: PHOS. BRONZE UNS-C51000.
- ⑨ OPTIONAL PLATING ON LEAD -IN OF PINS.
- ⑩ RECOMMENDED MOUNTING SCREW SIZE #2-56 X 3/8 LG FILLISTER HEAD MACHINE SCREW FOR 1/16, 3/32, & 1/8 BOARDS.
- ⑪ TAIL TIPS TO BE TIN LEAD DIPPED, DIP LENGTH TO BE DIM "D" MINUS .02/ .05 MAX. 100u"/2.54um MIN.
- ⑫ CORING OPTIONAL FOR MANUFACTURING AROUND TERMINAL TAILS.
13. 65496-***LF IS JUST A LEAD FREE PRODUCT.
14. THE HOUSING OF XXXXX-XYLF WILL WITHSTAND EXPOSURE TO 260°C PEAK TEMPERATURE FOR 10 SECONDS IN A WAVE SOLDER PROCESS.
15. PLATING OPTION : MAYBE EITER GOLD OR GXT PLATING AT MANUFACTURER SITE



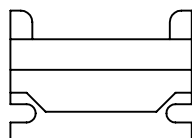
STYLE A
2 X 5
SEE NOTE 7



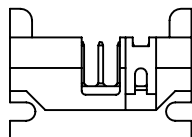
STYLE C



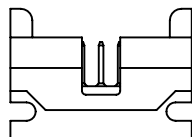
2 X 8 OR MORE PINS
STYLE B



STYLE D



STANDARD 2 X 7
STYLE B



STANDARD 2 X 5
STYLE B

Tous droits strictement reserves. Reproduction ou communication a des tiers interdite sous quelque forme que ce soit sans autorisation ecrite du proprietaire. Propriete de c FCI. Droits de reproduction FCI.



All rights strictly reserved. Reproduction or issue to third parties in any form whatever is not permitted without written authority from the proprietor. Property of FCI. Copyright FCI.

mat'l. code		tolerances unless otherwise specified		CUSTOMER COPY		FCI www.fciconnect.com		
ltr	ecn no	dr	date	linear	.XX ±.01/.X±.3 .XXX ±.005/.XX±.13 .XXXX ±.0020/.XXX±.051	projection	title HEADER,QUICKIE SLIM LINE,RIGHT ANGLE	
AA								angles
				dr	P.JAYADEEP	09/21/04	code	213
				enr	H.SUNDY	09/21/04	size	dwg no
				chr	H.SUNDY	09/21/04	scale	5:1
				appd	H.SUNDY	09/21/04	A	65496
sheet index	revision sheet						cage code	26

Tous droits strictement reserves. Reproduction ou communication a des tiers interdite sous quelque forme que ce soit sans autorisation ecrite du proprietaire. Propriete de c FCI. Droits de reproduction FCI.



All rights strictly reserved. Reproduction or issue to third parties in any form whatever is not permitted without written authority from the proprietor. Property of FCI. Copyright FCI.

PRODUCT NO.	SIZE	STYLE	DIM A	DIM B	DIM C	DIM D	DIM E	TERM CONFIG	TERMINAL PLATING NOTE 15
65496-001	2 X 5	B	.95/24.13	.400/10.16	.72/18.29	.105/2.67	.78/19.81	ROUND	30u"/.76um Au- 50u"/1.27um Ni
-002						.150/3.81		SQ	150u"/3.81um TIN
-003						.675/17.15		SQ	30u"/.76um Au- 50u"/1.27um Ni
-004						.105/2.67		SQ	150u"/3.81um TIN
-005						.150/3.81		ROUND	30u"/.76um Au- 50u"/1.27um Ni
-006	2 X 5		.95/24.13	.400/10.16	.72/18.29	.675/17.15	.78/19.81	SQ	150u"/3.81um TIN
-007	2 X 10		1.45/36.83	.900/22.86	1.22/30.99	.105/2.67	1.28/32.51	ROUND	30u"/.76um Au- 50u"/1.27um Ni
-008						.150/3.81		SQ	150u"/3.81um TIN
-009						.675/17.15		SQ	30u"/.76um Au- 50u"/1.27um Ni
-010						.105/2.67		SQ	150u"/3.81um TIN
-011						.150/3.81		ROUND	30u"/.76um Au- 50u"/1.27um Ni
-012	2 X 10		1.45/36.83	.900/22.86	1.22/30.99	.675/17.15	1.28/32.51	SQ	150u"/3.81um TIN
-013	2 X 13		1.75/44.45	1.200/30.48	1.52/38.61	.105/2.67	1.58/40.13	ROUND	30u"/.76um Au- 50u"/1.27um Ni
-014						.150/3.81		SQ	150u"/3.81um TIN
-015						.675/17.15		SQ	30u"/.76um Au- 50u"/1.27um Ni
-016						.105/2.67		SQ	150u"/3.81um TIN
-017						.150/3.81		ROUND	30u"/.76um Au- 50u"/1.27um Ni
-018	2 X 13		1.75/44.45	1.200/30.48	1.52/38.61	.675/17.15	1.58/40.13	SQ	150u"/3.81um TIN
-019	2 X 17		2.15/54.61	1.600/40.64	1.92/48.77	.105/2.67	1.98/50.29	ROUND	30u"/.76um Au- 50u"/1.27um Ni
-020						.150/3.81		SQ	150u"/3.81um TIN
-021						.675/17.15		SQ	30u"/.76um Au- 50u"/1.27um Ni
-022						.105/2.67		SQ	150u"/3.81um TIN
-023						.150/3.81		ROUND	30u"/.76um Au- 50u"/1.27um Ni
-024	2 X 17		2.15/54.61	1.600/40.64	1.92/48.77	.675/17.15	1.98/50.29	SQ	150u"/3.81um TIN
-025	2 X 20		2.45/62.23	1.900/48.26	2.22/56.39	.105/2.67	2.28/57.91	ROUND	30u"/.76um Au- 50u"/1.27um Ni
-026						.150/3.81		SQ	150u"/3.81um TIN
-027						.675/17.15		SQ	30u"/.76um Au- 50u"/1.27um Ni
-028						.105/2.67		SQ	150u"/3.81um TIN
-029						.150/3.81		ROUND	30u"/.76um Au- 50u"/1.27um Ni
-030	2 X 20		2.45/62.23	1.900/48.26	2.22/56.39	.675/17.15	2.28/57.91	SQ	150u"/3.81um TIN
-031	2 X 25		2.95/74.93	2.400/60.96	2.72/69.09	.105/2.67	2.78/70.61	ROUND	30u"/.76um Au- 50u"/1.27um Ni
-032						.150/3.81		SQ	150u"/3.81um TIN
-033						.675/17.15		SQ	30u"/.76um Au- 50u"/1.27um Ni
-034						.105/2.67		SQ	150u"/3.81um TIN
65496-035	2 X 25	B	2.95/74.93	2.400/60.96	2.72/69.09	.150/3.81	2.78/70.61	ROUND	30u"/.76um Au- 50u"/1.27um Ni

mat'l. code		tolerances unless otherwise specified		CUSTOMER COPY			
ltr	ecn no	dr	date	linear	.XX ±.01/.X±.3	projection	title
AA				angles	.XXX ±.005/.XX±.13		HEADER, QUICKIE
				dr	.XXXX ±.0020/.XXX±.051	INCH/MM	SLIM LINE, RIGHT ANGLE
				enr	0° ±2°	scale	product family
				chr	P.JAYADEEP 09/21/04	5:1	KQE.HDR.
				appd	H.SUNDY 09/21/04		code
sheet index	revision sheet						size
							dwg no
							213
							sheet
							3 of 7

PRODUCT NO.	SIZE	STYLE	DIM A	DIM B	DIM C	DIM D	DIM E	TERM CONFIG	TERMINAL PLATING NOTE 15
65496-036	2 X 25	B	2.95/74.93	2.400/50.96	2.72/69.09	.675/17.15	2.78/70.61	SQ	30u"/.76um Au- 50u"/1.27um Ni
-037	2 X 7		1.15/29.21	.600/15.24	.92/23.37	.105/2.67	.98/24.89	ROUND	150u"/3.81um TIN
-038						.150/3.81		SQ	30u"/.76um Au- 50u"/1.27um Ni
-039						.675/17.15		SQ	150u"/3.81um TIN
-040						.105/2.67		SQ	30u"/.76um Au- 50u"/1.27um Ni
-041						.150/3.81		ROUND	150u"/3.81um TIN
-042	2 X 7		1.15/29.21	.600/15.24	.92/23.37	.675/17.15	.98/24.89	SQ	30u"/.76um Au- 50u"/1.27um Ni
-043	2 X 8		1.25/31.75	.700/17.78	1.02/25.91	.105/2.67	1.08/27.43	ROUND	150u"/3.81um TIN
-044						.150/3.81		SQ	30u"/.76um Au- 50u"/1.27um Ni
-045						.675/17.15		SQ	150u"/3.81um TIN
-046						.105/2.67		SQ	30u"/.76um Au- 50u"/1.27um Ni
-047						.150/3.81		ROUND	150u"/3.81um TIN
-048	2 X 8		1.25/31.75	.700/17.78	1.02/25.91	.675/17.15	1.08/27.43	SQ	30u"/.76um Au- 50u"/1.27um Ni
-049	2 X 30		3.45/87.63	2.900/73.66	3.22/81.79	.105/2.67	3.28/83.31	ROUND	150u"/3.81um TIN
-050						.150/3.81		SQ	30u"/.76um Au- 50u"/1.27um Ni
-051						.675/17.15		SQ	150u"/3.81um TIN
-052						.105/2.67		SQ	30u"/.76um Au- 50u"/1.27um Ni
-053						.150/3.81		ROUND	150u"/3.81um TIN
-054	2 X 30		3.45/87.63	2.900/73.66	3.22/81.79	.675/17.15	3.28/83.31	SQ	30u"/.76um Au- 50u"/1.27um Ni
-055	2 X 5		.95/24.13	.400/10.16	.72/18.29	.105/2.67	.78/19.81	ROUND	150u"/3.81um TIN
-056	2 X 5		.95/24.13	.400/10.16	.72/18.29	.150/3.81	.78/19.81	ROUND	
-057	2 X 5		.95/24.13	.400/10.16	.72/18.29	.675/17.15	.78/19.81	SQ	
-058	2 X 7		1.15/29.21	.600/15.24	.92/23.37	.105/2.67	.98/24.89	ROUND	
-059	2 X 7		1.15/29.21	.600/15.24	.92/23.37	.150/3.81	.98/24.89	ROUND	
-060	2 X 7		1.15/29.21	.600/15.24	.92/23.37	.675/17.15	.98/24.89	SQ	
-061	2 X 8		1.25/31.75	.700/17.78	1.02/25.91	.105/2.67	1.08/27.43	ROUND	
-062	2 X 8		1.25/31.75	.700/17.78	1.02/25.91	.150/3.81	1.08/27.43	ROUND	
-063	2 X 8		1.25/31.75	.700/17.78	1.02/25.91	.675/17.15	1.08/27.43	SQ	
-064	2 X 10		1.45/36.83	.900/22.86	1.22/30.99	.105/2.67	1.28/32.51	ROUND	
-065	2 X 10		1.45/36.83	.900/22.86	1.22/30.99	.150/3.81	1.28/32.51	ROUND	
-066	2 X 10		1.45/36.83	.900/22.86	1.22/30.99	.675/17.15	1.28/32.51	SQ	
-067	2 X 13		1.75/44.45	1.200/30.48	1.52/38.61	.105/2.67	1.58/40.13	ROUND	
-068	2 X 13		1.75/44.45	1.200/30.48	1.52/38.61	.150/3.81	1.58/40.13	ROUND	
-069	2 X 13		1.75/44.45	1.200/30.48	1.52/38.61	.675/17.15	1.58/40.13	SQ	
65496-070	2 X 17	B	2.15/54.61	1.600/40.64	1.92/48.77	.105/2.67	1.98/50.29	ROUND	30u"/.76um Au- 50u"/1.27um Ni

Tous droits strictement reserves. Reproduction ou communication a des tiers interdite sous quelque forme que ce soit sans autorisation ecrite du proprietaire. Propriete de c FCI. Droits de reproduction FCI.



All rights strictly reserved. Reproduction or issue to third parties in any form whatever is not permitted without written authority from the proprietor. Property of FCI. Copyright FCI.

mat'l. code		tolerances unless otherwise specified		CUSTOMER COPY		FCI	
ltr	ecn no	dr	date	linear	.XX ±.01/.X±.3	projection	title
AA					.XXX ±.005/.XX±.13	⊕	HEADER,QUICKIE
				angles	.XXX ±.0020/.XXX±.051	↔	SLIM LINE,RIGHT ANGLE
				dr	0° ±2°	INCH/MM	product family
				enr	P.JAYADEEP 09/21/04	2:1	QKE.HDR.
				chr	H.SUNDY 09/21/04	A	code
				appd	H.SUNDY 09/21/04	65496	213
sheet index	revision sheet						sheet
							4 of 7

Tous droits strictement réservés. Reproduction ou communication à des tiers interdite sous quelque forme que ce soit sans autorisation écrite du propriétaire. Propriété de c FCI. Droits de reproduction FCI.



All rights strictly reserved. Reproduction or issue to third parties in any form whatever is not permitted without written authority from the proprietor. Property of FCI. Copyright FCI.

PRODUCT NO	SIZE	STYLE	DIM A	DIM B	DIM C	DIM D	DIM E	TERM CONFIG	TERMINAL PLATING NOTE 15
65496-071	2 X 17	B	2.15/54.61	1.600/40.64	1.92/48.77	.150/3.81	1.98/50.29	ROUND	30u"/.76um Au- 50u"/1.27um Ni
-072	2 X 17		2.15/54.61	1.600/40.64	1.92/48.77	.675/17.15	1.98/50.29	SQ	
-073	2 X 20		2.45/62.23	1.900/48.26	2.22/56.39	.105/2.67	2.28/57.91	ROUND	
-074	2 X 20		2.45/62.23	1.900/48.26	2.22/56.39	.150/3.81	2.28/57.91	ROUND	
-075	2 X 20		2.45/62.23	1.900/48.26	2.22/56.39	.675/17.15	2.28/57.91	SQ	
-076	2 X 25		2.95/74.93	2.400/60.96	2.72/69.09	.105/2.67	2.78/70.61	ROUND	
-077	2 X 25		2.95/74.93	2.400/60.96	2.72/69.09	.150/3.81	2.78/70.61	ROUND	
-078	2 X 25		2.95/74.93	2.400/60.96	2.72/69.09	.675/17.15	2.78/70.61	SQ	
-079	2 X 30		3.45/87.63	2.900/73.66	3.22/81.79	.105/2.67	3.28/33.31	ROUND	
-080	2 X 30		3.45/87.63	2.900/73.66	3.22/81.79	.150/3.81	3.28/33.31	ROUND	
-081	2 X 30	B	3.45/87.63	2.900/73.66	3.22/81.79	.675/17.15	3.28/33.31	SQ	
-082	2 X 5	A	.95/24.13	.400/10.16	.72/18.29	.105/2.67	.78/19.81	ROUND	
-083						.150/3.81		ROUND	
-084						.675/17.15		SQ	30u"/.76um Au- 50u"/1.27um Ni
-085						.105/2.67		ROUND	30u"/.76um Au- 50u"/1.27um Ni
-086						.150/3.81		ROUND	30u"/.76um Au- 50u"/1.27um Ni
-087						.675/17.15		SQ	30u"/.76um Au- 50u"/1.27um Ni
-088						.105/2.67		SQ	150u"/3.81um TIN
-089						.150/3.81		SQ	150u"/3.81um TIN
-090		A				.675/17.15		SQ	150u"/3.81um TIN
-091		B				.105/2.67		ROUND	30u"/.76um GXT/GOLD FLASH
-092	2 X 5	A	.95/24.13	.400/10.16	.72/18.29	.105/2.67	.78/19.81	ROUND	30u"/.76um GXT/GOLD FLASH
-093	2 X 10	B	1.45/36.83	.900/22.86	1.22/30.99	.105/2.67	1.28/32.51	ROUND	30u"/.76um GXT/GOLD FLASH
-094	2 X 20		2.45/62.23	1.900/48.26	2.22/56.39	.150/3.81	2.28/57.91	ROUND	30u"/.76um GXT/GOLD FLASH
-095	2 X 7		1.15/29.21	.600/15.24	.92/23.37	.675/17.15	.98/24.89	SQ	30u"/.76um GXT/GOLD FLASH
-096	2 X 10		1.45/36.83	.900/22.85	1.22/30.99	.105/2.67	1.28/32.51	SQ	30u"/.76um Au- 50u"/1.27um Ni
-097	2 X 15		1.95/49.53	1.400/35.56	1.72/43.69		1.78/45.21	SQ	30u"/.76um Au- 50u"/1.27um Ni
-098	2 X 17		2.15/54.61	1.600/40.64	1.92/48.77		1.98/50.29	SQ	30u"/.76um Au- 50u"/1.27um Ni
-099	2 X 20		2.45/62.23	1.900/48.26	2.22/56.39		2.28/57.91	SQ	30u"/.76um Au- 50u"/1.27um Ni
-100	2 X 30		3.45/87.63	2.900/73.66	3.22/81.79		3.28/33.31	SQ	30u"/.76um Au- 50u"/1.27um Ni
-101	2 X 12		1.65/41.91	1.100/27.94	1.42/36.07	.105/2.67	1.48/37.60	ROUND	30u"/.76um Au- 50u"/1.27um Ni
-102			1.65/41.91	1.100/27.94	1.42/36.07	.150/3.81		ROUND	30u"/.76um Au- 50u"/1.27um Ni
-103			1.65/41.91	1.100/27.94	1.42/36.07	.675/17.15		SQ	30u"/.76um Au- 50u"/1.27um Ni
-104			1.65/41.91	1.100/27.94	1.42/36.07	.105/2.67		ROUND	30u"/.76um Au- 50u"/1.27um Ni
65496-105	2 X 12	B	1.65/41.91	1.100/27.94	1.42/36.07	.150/3.81	1.48/37.60	ROUND	30u"/.76um Au- 50u"/1.27um Ni

mat'l. code		tolerances unless otherwise specified		CUSTOMER COPY		FCI www.fciconnect.com			
ltr	ecn no	dr	date	linear	.XX ±.01/.X±.3	projection	title HEADER,QUICKIE SLIM LINE,RIGHT ANGLE		
AA					.XXX ±.005/.XX±.13			INCH/MM	
					.XXXX ±.0020/.XXX±.051				
				angles	0° ±2°	scale 5:1	product family KQE.HDR.		
				dr	P.JAYADEEP 09/21/04			size 65496	code 213
				engr	H.SUNDY 09/21/04				
				chr	H.SUNDY 09/21/04				
				appd	H.SUNDY 09/21/04		sheet 5 of 7		
sheet index	revision sheet								

Tous droits strictement reserves. Reproduction ou communication a des tiers interdite sous quelque forme que ce soit sans autorisation ecrite du proprietaire. Propriete de c FCI. Droits de reproduction FCI.



All rights strictly reserved. Reproduction or issue to third parties in any form whatever is not permitted without written authority from the proprietor. Property of FCI. Copyright FCI.

PRODUCT NO.	SIZE	STYLE	DIM A	DIM B	DIM C	DIM D	DIM E	TERM CONFIG	TERMINAL PLATING NOTE 15
65496-106	2 X 12	B	1.65/41.91	1.100/27.94	1.42/36.07	.675/17.15	1.48/37.60	SQ	30u"/.76um Au- 50u"/1.27um Ni
-107						.105/2.67		ROUND	30u"/.76um GXT/GOLD FLASH
-108						.150/3.81		ROUND	30u"/.76um GXT/GOLD FLASH
-109						.675/17.15		SQ	30u"/.76um GXT/GOLD FLASH
-110						.105/2.67		SQ	150u"/3.81um TIN
-111						.150/3.81		SQ	150u"/3.81um TIN
-112	2 X 12		1.65/41.91	1.100/27.94	1.42/36.07	.675/17.15	1.48/37.60	SQ	150u"/3.81um TIN
-113	2 X 15		1.95/49.53	1.400/35.60	1.72/43.69	.105/2.67	1.78/45.21	ROUND	30u"/.76um Au- 50u"/1.27um Ni
-114						.150/3.81		ROUND	30u"/.76um Au- 50u"/1.27um Ni
-115						.675/17.15		SQ	30u"/.76um Au- 50u"/1.27um Ni
-116						.105/2.67		ROUND	30u"/.76um Au- 50u"/1.27um Ni
-117						.150/3.81		ROUND	30u"/.76um Au- 50u"/1.27um Ni
-118						.675/17.15		SQ	30u"/.76um Au- 50u"/1.27um Ni
-119						.105/2.67		ROUND	30u"/.76um GXT/GOLD FLASH
-120						.150/3.81		ROUND	30u"/.76um GXT/GOLD FLASH
-121						.675/17.15		SQ	30u"/.76um GXT/GOLD FLASH
-122						.105/2.67		SQ	150u"/3.81um TIN
-123						.150/3.81		SQ	150u"/3.81um TIN
-124	2 X 15		1.95/49.53	1.400/35.60	1.72/43.69	.675/17.15	1.78/45.21	SQ	150u"/3.81um TIN
-125	2 X 22		2.65/67.31	2.100/53.34	2.42/61.47	.105/2.67	2.48/63.00	ROUND	30u"/.76um Au- 50u"/1.27um Ni
-126						.150/3.81		ROUND	30u"/.76um Au- 50u"/1.27um Ni
-127						.675/17.15		SQ	30u"/.76um Au- 50u"/1.27um Ni
-128						.105/2.67		ROUND	30u"/.76um Au- 50u"/1.27um Ni
-129						.150/3.81		ROUND	30u"/.76um Au- 50u"/1.27um Ni
-130						.675/17.15		SQ	30u"/.76um Au- 50u"/1.27um Ni
-131						.105/2.67		ROUND	30u"/.76um GXT/GOLD FLASH
-132						.150/3.81		ROUND	30u"/.76um GXT/GOLD FLASH
-133						.675/17.15		SQ	30u"/.76um GXT/GOLD FLASH
-134						.105/2.67		SQ	150u"/3.81um TIN
-135						.150/3.81		SQ	150u"/3.81um TIN
-136	2 X 22		2.65/67.31	2.100/53.34	2.42/61.47	.675/17.15	2.48/63.00	SQ	150u"/3.81um TIN
-137	2 X 5	B	.95/24.13	.400/10.16	.72/18.29	.150/3.81	.78/19.81	ROUND	30u"/.76um GXT/GOLD FLASH
-138	2 X 5	A	.95/24.13	.400/10.16	.72/18.29		.78/19.81	ROUND	30u"/.76um GXT/GOLD FLASH
-139	2 X 7	B	1.15/29.21	.600/15.24	.92/23.37		.98/24.89	ROUND	30u"/.76um GXT/GOLD FLASH
65496-140	2 X 8	B	1.25/31.75	.700/17.78	1.02/25.91	.150/3.81	1.08/27.43	ROUND	30u"/.76um GXT/GOLD FLASH

mat'l. code		tolerances unless otherwise specified		CUSTOMER COPY			
ltr	ecn no	dr	date	linear	.XX ±.01/.X±.3	projection	title
AA							
				angles	.XXX ±.0020/.XXX±.051	INCH/MM	product family
				dr	0° ±2°		
				enr	P.JAYADEEP 09/21/04	A	code
				chr	P.JAYADEEP 09/21/04		
				appd	P.JAYADEEP 09/21/04	sheet	6 of 7
sheet index	revision sheet						

Tous droits strictement réservés. Reproduction ou communication à des tiers interdite sous quelque forme que ce soit sans autorisation écrite du propriétaire. Propriété de c FCI. Droits de reproduction FCI.



All rights strictly reserved. Reproduction or issue to third parties in any form whatever is not permitted without written authority from the proprietor. Property of FCI. Copyright FCI.

PRODUCT NO.	SIZE	STYLE	DIM A	DIM B	DIM C	DIM D	DIM E	TERM CONFIG	TERMINAL PLATING NOTE 15
65496-141	2 X 10	B	1.45/36.83	.900/22.86	1.22/30.99	.150/3.81	1.28/32.51	ROUND	30u"/.76um GXT/GOLD FLASH
-142	2 X 13		1.75/44.45	1.200/30.48	1.52/38.61		1.58/40.13		
-143	2 X 17		2.15/54.61	1.600/40.64	1.92/48.77		1.98/50.29		
-144	2 X 25		2.95/74.93	2.400/60.96	2.72/69.09		2.78/70.61		
-145	2 X 30		3.45/87.63	2.900/73.66	3.22/81.79	.150/3.81	3.28/83.31		
-146	2 X 7		1.15/29.21	.600/15.24	.92/23.37	.105/2.67	.98/24.89		
-147	2 X 8		1.25/31.75	.700/17.78	1.02/25.91		1.08/27.43		
-148	2 X 13		1.75/44.45	1.200/30.48	1.52/38.61		1.58/40.13		
-149	2 X 17		2.15/54.61	1.600/40.64	1.92/48.77		1.98/50.29		
-150	2 X 20		2.45/62.23	1.900/48.26	2.22/56.39		2.28/57.91		
-151	2 X 25		2.95/74.93	2.400/60.96	2.72/69.09		2.78/70.61		
-152	2 X 30		3.45/87.63	2.900/73.66	3.22/81.79		3.28/83.31	ROUND	30u"/.76um GXT/GOLD FLASH
-153	2 X 13		1.75/44.45	1.200/30.48	1.52/38.61		1.58/40.13	SQ	30u"/.76um Au- 50u"/1.27um Ni
-154	2 X 25	B	2.95/74.93	2.400/60.96	2.72/69.09		2.78/70.61	SQ	30u"/.76um Au- 50u"/1.27um Ni
-155	2 X 25	C	2.95/74.93	2.400/60.96	2.72/69.09		2.78/70.61	ROUND	30u"/.76um Au- 50u"/1.27um Ni
-156	2 X 25	D	2.95/74.93	2.400/60.96	2.72/69.09	.105/2.67	2.78/70.61	ROUND	30u"/.76um Au- 50u"/1.27um Ni
65496-157	2 X 25	B	2.95/74.93	2.400/60.96	2.72/69.09	.105/2.67	2.78/70.61	ROUND	30u"/.76um Au- 50u"/1.27um Ni

NOTE 11

mat'l. code				tolerances unless otherwise specified				CUSTOMER COPY		FCI www.fciconnect.com	
ltr	ecn no	dr	date	linear	.xx ±.01/.X±.3			projection	title		
AA					.xxx ±.005/.xx±.13				HEADER,QUICKIE		
					.xxxx ±.0020/.xxx±.051				SLIM LINE,RIGHT ANGLE		
				angles	0° ±2°			INCH/MM		product family QKE.HDR. code	
				dr	P.JAYADEEP	09/21/04		scale		size	
				enr	H.SUNDY	09/21/04		5:1		213	
				chr	H.SUNDY	09/21/04		A		sheet	
				appd	H.SUNDY	09/21/04		65496		7 of 7	
sheet index	revision sheet										

cage code

ACAD

PDM: Rev:AA

STATUS: Released 26 Printed: Feb 19, 2008